

# PRECISION BALANCES WLC









release date 09-07-2010



Balances series WLC are designed for fast and precise mass determination in laboratory and industrial conditions. They can also be used in areas with no access to mains (230V), as their standard equipment they includes internal rechargeable battery and RS 232 output. WLC series, independently on model (pan size: 128×128, 125×145, 195×195, 290×360 and 400×500 mm) and capacity, features stainless steel weighing platform and backlit LCD display providing good reading of weighing result.

Balances series A2 offer the possibility of weighing loads outside weighing platform (so called under hook weighing), where a load is hanged under the instrument. This is an alternative for weighing loads with non-standard dimensions and shapes.

-  Parts counting
-  Checkweighing
-  Animal weighing
-  Percent setup
-  Caps lock of max indication
-  Measurement in Newton

## Technical data:

	WLC 0,6/B1*	WLC 1,2/B1*	WLC 1/A2	WLC 1,2/3/A2*	WLC 2/A2	WLC 3/6/A2*	WLC 6/A2	WLC 6/12/A2*	WLC 10/A2	WLC20/A2
Max capacity	0,6 kg	1,2 kg	1 kg	1,2/3 kg	2 kg	3/6 kg	6 kg	6/12 kg	10 kg	20 kg
Minimal load	0,5 g	1 g	-	1 / 2,5 g	-	2,5 / 5 g	-	5 / 10 g	-	-
Reading unit	0,01 g	0,02 g	0,01 g	0,02/0,05 g	0,01 g	0,05/0,1 g	0,1 g	0,1/0,2 g	0,1 g	0,1 g
Verification unit	0,1 g	0,2 g	-	0,2 / 0,5 g	-	0,5 / 1 g	-	1 / 2 g	-	-
Tare range	-0,6 kg	-1,2 kg	-1 kg	-3 kg	-2 kg	-6 kg	-6 kg	-12 kg	-10 kg	-20 kg
Repeatability	0,01 g	0,02 g	0,03 g	0,02/0,05 g	0,03 g	0,05/0,1 g	0,1 g	0,1/0,2 g	0,2 g	0,2 g
Linearity	±0,01 g	±0,02 g	±0,03 g	±0,02/0,05 g	±0,03 g	±0,05/0,1 g	±0,1 g	±0,1/0,2 g	±0,2 g	±0,2 g
Pan size	125 × 145 mm				195 × 195 mm					
OIML class	II	II	-	II	-	II	-	II	-	-
Interface	RS 232									
Power supply	230V / 11V AC or 120V / 11V AC, and accumulator									
IP rating	IP 43									
Stabilization time	3 s									
Working temperature	+15° - +30 °C									
Display	LCD (backlit)									
Net weight/Gross weight	1,2 / 2 kg		3 / 4 kg							
Packaging dimensions	320×210×150 mm		320×210×150 mm							

\* verified balances

## Technical data:

	WLC 6/C1/R	WLC 6/12/C1/R*	WLC 12/C1/R	WLC 12/30/C1/R*	WLC 30/C1/R	WLC 60/C2/R*	WLC 60/C2/R	WLC 60/120/C2/R*	WLC 120/C2/R	
	WLC 6/C1/K	WLC 6/12/C1/K*	WLC 12/C1/K	WLC 12/30/C1/K*	WLC 30/C1/K	WLC 60/C2/K*	WLC 60/C2/K	WLC 60/120/C2/K*	WLC 120/C2/K	
Max capacity	6 kg	6/12 kg	12 kg	12/30 kg	30 kg	60 kg	60 kg	60/120 kg	120 kg	
Minimal load	-	5 / 10 g	-	10 / 25 g	-	50 g	-	50 / 100 g	-	
Reading unit	0,1 g	0,1/0,2 g	0,2 g	0,2/0,5 g	0,5 g	1 g	1 g	1/2 g	2 g	
Verification unit	-	1 / 2 g	-	2 / 5 g	-	10 g	-	10 / 20 g	-	
Tare range	-6 kg	-12 kg	-12 kg	-30 kg	-30 kg	-60 kg	-60 kg	-120 kg	-120 kg	
Repeatability	0,3 g	0,1/0,2 g	0,6 g	0,2/0,5 g	1,5 g	3 g	3 g	1/2 g	6 g	
Linearity	±0,3 g	±0,1/0,2 g	±0,6 g	±0,2/0,5 g	±1,5 g	±3 g	±3 g	±1/2 g	±6 g	
Pan size	290 × 360 mm				400 × 500 mm					
OIML class	-	II	-	II	-	II	-	II	-	
Interface	RS 232									
Power supply	230V / 11V AC or 120V / 11V AC, and accumulator									
Stabilization time	3 s									
Working temperature	+15° - +30 °C									
Display	LCD (backlit)									
Net weight/Gross weight	7 / 8 kg					16 / 18 kg				
Packaging dimensions	550×420×220 mm					720×580×220 mm				

\* verified balances

## Additional equipment:

"KAFKA" THERMAL PRINTER

IMPACT "EPSON" PRINTER

RACK FOR UNDER HOOK WEIGHING

SUITCASE FOR BALANCE

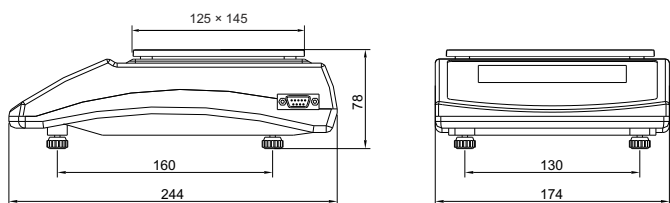
ADDITIONAL LCD DISPLAY

DENSITY DETERMINATION KIT FOR SOLIDS AND LIQUIDS

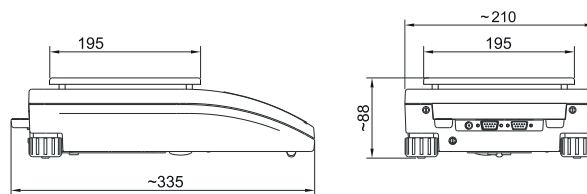
EXTERNAL BATTERY PACK WITH CHARGER

COMPUTER SOFTWARE PW-WIN 2005, RAD-KEY 2000, REC-FS 2000

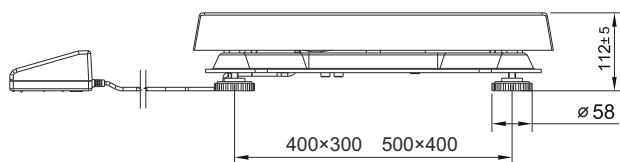
B1 version



A2 version



/K version



/R version

